

Wilson's Ice Cream Flavors

- Chocolate • Strawberry • French Vanilla
- Chocolate Chip • Mint Chip • Peppermint Stick
- Mackinac Island Fudge • Rainbow Sherbet
- Black Cherry • Butter Pecan • Maple Nut
- Mocha Almond Fudge • Sneakers • Buffalo Trax
- Strawberry Cheesecake Yogurt • Cookie Dough
 - Chocolate Chunk Yogurt • Coconut Joy
 - Fat-Free Sugar-Free Chocolate Swirl
 - Cookies 'n Cream • Caramel Collision
 - Chocolate Peanut Butter Explosion

Ask your server about our feature flavors

Welcome to Wilson's

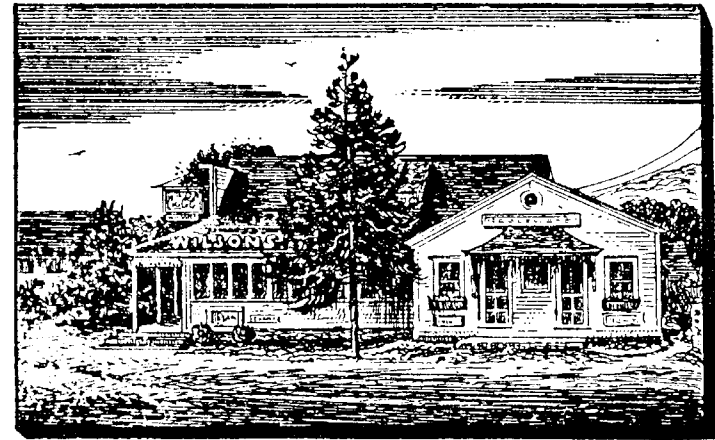
Welcome to good food, delicious desserts, friendly service and lots of fun. That's what we're all about.

If you're hungry, you couldn't be in a better place.
We offer something to please everyone.

We've worked hard to make Wilson's a special place.
Thank you for making it your place.

Wilson's Restaurant

DOWNTOWN EPHRAIM
9990 WATER STREET



920-854-2041

CARRY-OUT ORDERS WELCOME

Legend

Established in 1906, Wilson's has grown in popularity with each succeeding generation of patrons. Year after year they return to Ephraim, making this their first stop for relaxation and refreshment, information and the exchange of friendly greetings.

Wilson's known for its friendly atmosphere, welcomes you and wants you to enjoy its cleanliness and courteous service.

We invite you to enjoy our home brewed 1906 draft root beer. Served in a frosty mug, it has become a Wilson's tradition, sure to quench everyone's thirst.

www.WilsonsIceCream.com

Wilson's Restaurant

EPHRAIM

We have been preparing for your visit since 1906

Hamburgers

Our large, lean beefburgers, flamebroiled to perfection are presented with fries, tomato, lettuce, onion and pickle on the side

- Wilson's Hamburger . . . 6.25
- The All-American Cheeseburger . . . 6.95
- Country Bacon Cheeseburger . . . 7.95
- Pattymelt on rye bread with American and Swiss cheese . . . 8.25
- Mushroom Burger fresh sauteed mushrooms, with melted Baby Swiss . . . 7.95
- Double Cheeseburger two patties layered with American cheese . . . 8.95

- Hamburger served with lettuce, tomato, onion, pickle & chips . . . 4.25
- Cheeseburger served with lettuce, tomato, onion, pickle & chips . . . 4.95

Soup & Chili

- Homemade Soup or Chili . . . bowl 3.95 cup 2.95

Wilson's Specialties

- Nachos homemade white corn tortilla chips with nacho cheese, refried beans & peppers on the side . . . 4.75
- Nachos Supreme our homemade chips with taco meat, nacho cheese, sour cream, green onions, black olives, cheddar cheese and homemade salsa . . . 8.25
- Chili with Cheese & Garlic Toast bowl of chili topped with cheddar cheese and served with garlic toast . . . 5.95
- Veggie Wrap assortment of fresh veggies lightly marinated in our house dressing, wrapped in a tortilla & served with tortilla chips . . . 7.50
- Chicken Salad Sandwich & Cup of Soup
Homemade chicken salad served on whole wheat bread with a cup of homemade soup or chili . . . 7.75

- Fish Sandwich Basket breaded cod fillet served with fries and homemade coleslaw . . . 8.25

Children's Corner

Our children's items are served with applesauce

- Hamburger . . . 3.45 w/cheese . . . 3.95
- Peanut Butter & Jelly . . . 3.45
- Grilled Cheese . . . 3.45
- Chicken Tenders (3 delicious tenders) . . . 4.75

Sandwiches

Our sandwiches are made with freshly baked bread and served with our homemade cole slaw, chips and a big pickle spear

- The Reuben thinly sliced corned beef topped with sauerkraut and Swiss cheese, served between slices of fresh rye bread and grilled for a perfect blend of flavors . . . 8.75
- The Rachael Reuben same as the Reuben except made with thinly sliced turkey breast . . . 8.75
- Bacon, Lettuce & Tomato triple decker on toast with mayo & thick center-cut bacon . . . 7.75
- Clubhouse sliced breast of turkey layered with bacon, lettuce, tomato and mayo served triple decker . . . 8.75
- Simple Turkey Sandwich sliced breast of turkey on a Kaiser roll with mayo, lettuce & tomato on the side . . . 7.25

- Charbroiled Chicken Breast Sandwich served with lettuce, tomato and mayo on the side, cole slaw & fries . . . 8.25

Hot Dogs

Chicago-style beef hot dogs served on poppy seed buns with fries.

- Chicago Dog topped with relish, tomatoes, peppers, onion & pickle spear . . . 5.45
- Chili Dog topped with our homemade chili . . . 5.45
- Plain Dog . . . 3.95

Salads

- Taco Salad fresh crisp, flour tortilla bowl filled with crisp salad greens topped with taco meat, onions, black olives, tomatoes, cheddar cheese and sour cream, accompanied by tortilla chips and homemade salsa . . . 8.25
- Charbroiled Chicken Salad A generous tossed salad with a marinated charbroiled chicken breast served with a breadstick . . . 8.75
- Tossed Salad served with a breadstick and French, Peppercorn ranch, 1000 Island or House dressing on the side . . . 3.95

On the Side

- French Fries . . . 2.95
- Onion Rings . . . 3.95
- Cheese Curds on a Bed of Fries . . . 5.25
- Fresh Homemade Salsa & Crisp White Corn Tortilla Chips . . . 3.45
- Chili Cheese Fries . . . 5.25
- Cheese Fries . . . 4.25

Desserts

- Homemade Door County Cherry Pie . . . 4.25
- a la mode . . . 5.25

Peninsula State Park Centennial Sundae



Eagle Harbor Perfection
French vanilla ice cream, perfectly paired with hot fudge and wild cherry topping finished off with whipped cream and pecans
6.75

Ice Cream Specialties

- Wilson's Banquet you'll need a friend to finish this one - 5 flavors of ice cream and three toppings of your choice, loads of whipped cream, cherries and pecans . . . 14.95
- Three Kings chocolate, French vanilla and mint chocolate chip ice cream, hot fudge, whipped cream and a cherry . . . 6.25
- Ephraim Special 3 scoops of French vanilla ice cream, hot fudge, whipped cream, pecans and cherries . . . 5.95
- Dark Secret tall glass coated with hot fudge, filled with chocolate ice cream, topped with marshmallow and a cherry . . . 4.95
- Banana Split banana with French vanilla, chocolate and strawberry ice cream, assorted toppings, topped with whipped cream, pecans and cherries . . . 6.50
- Wilson's Special a tall glass of French vanilla ice cream with layers of butterscotch, chocolate, marshmallow and a cherry . . . 4.95
- Dusty Road French vanilla, chocolate and chocolate chip ice cream topped with hot fudge and dusted with malt and a cherry . . . 6.25
- Cherry Berry Delight French vanilla ice cream, layered between wild cherry, blueberry and strawberry toppings served in a tall glass topped off with whipped cream and a cherry . . . 4.95
- Classic Turtle Sundae French vanilla ice cream, smothered in hot fudge and caramel, topped with pecans, whipped cream and a cherry . . . 6.75
- Children's Clown Sundae 1 scoop French vanilla ice cream, chocolate syrup hair, chocolate eyes, cherry nose and cone hat . . . 3.45

Super Sundae

Two large scoops of French vanilla ice cream with your choice of one of the toppings listed below and topped with whipped cream and a cherry

- Hot Fudge • Marshmallow • Chocolate
 - Strawberry • Butterscotch • Raspberry
 - Blueberry • Wild Cherry • Hot Caramel
- 5.25
PECANS 75c
Each additional topping 50c

Junior Sundae

French vanilla ice cream with your choice of one of the toppings listed below and topped with whipped cream and a cherry

- Hot Fudge • Marshmallow • Chocolate
 - Strawberry • Butterscotch • Raspberry
 - Blueberry • Wild Cherry • Hot Caramel
- 4.25
PECANS 75c
Each additional topping 50c

Root Beer

- Wilson's 1906 Home-Brewed Draft Root Beer or Diet Root Beer served in a frosted mug . . . 2.35
- Large Super mug . . . 3.95
- Home Brewed Draft Root Beer Float with French vanilla ice cream . . . 3.95
- Super Root Beer Float with French vanilla ice cream . . . 6.50
- Root Beer Frosty draft root beer blended with French vanilla ice cream served in a frosted mug. Refreshing . . . 4.50
- Also available TO GO . . . 1906 Root Beer in 1/2 Gallons

Ice Cream Soda

- Tall glass filled with generous portions of French vanilla ice cream, soda, and your choice of flavors listed below:
 - Chocolate • Strawberry
 - Root Beer • Cherry • Lemon • Vanilla
 3.85

Ice Cream Coolers

- Cappuccino Cooler Cappuccino & French vanilla ice cream . . . 4.50
- Boston Cooler Ginger ale & French vanilla ice cream . . . 3.75
- Sunset Cooler Lemonade and rainbow sherbet . . . 3.75

Extra Thick Malts & Milk Shakes

- Tall glass filled with generous portions of vanilla ice cream, milk, your choice of flavoring and served with the tin!
- Cherry • Strawberry • Root Beer • Vanilla
- Chocolate • Blueberry • Raspberry
- 4.50
- CHANGE OF ICE CREAM 35c

Dish of Ice Cream

- Single . . . 2.95
- Double . . . 3.95

Drinks

- Coca-Cola, Diet Coke, Sprite, Cherry Coke
- Assorted Flavor Phosphates, Ginger Ale . . . 1.75
- Milk, Skim Milk, Chocolate . . . 1.95
- Iced Tea fresh brewed bottomless . . . 1.75
- Coffee Fresh Ground reg. or decaf . . . 1.75
- Hot Tea . . . 1.95
- Bottled Water . . . 1.85
- Lemonade . . . 1.85